



SRI VENKATESWARA

COLLEGE OF ENGINEERING AND TECHNOLOGY

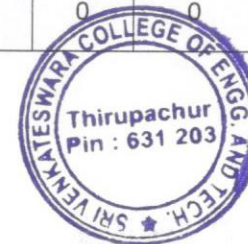
Thirupachur-631203, Tiruvallur TK & DT
Approved by AICTE New Delhi & Affiliated to Anna University, Chennai
(A Telugu Minority Institution)

STUDENT FEEDBACK ANALYSIS

PROGRAM CODE & NAME: 103-CIVIL ENGINEERING

ACADEMIC YEAR: 2022-2023

S.NO	QUESTIONNAIRE	EXCELLENT (5)	VERY GOOD (4)	GOOD (3)	FAIR (2)	POOR (1)	Total weight age	%	5-scale weight age
1	Rate the sequence of the Courses that you have studied are in sequence to what you have studied in the previous semester?	70	0	0	0	0	350	100	5
2	Rate the syllabus of the courses that you have studied in relation to the competencies expected out of the course	65	4	1	0	0	344	98.29	4.91
3	Rate the relevance of the units in Syllabus relevant to the course	70	0	0	0	0	350	100	5
4	Rate the distribution of the contact hours among the course components (Lecture-Tutorial Lectures- Practical)	63	4	3	0	0	340	97.14	4.86
5	Rate the electives offered in relation to the Technological advancements	69	0	1	0	0	348	99.42	4.97
6	Rate the relevance of the Text Books and reference books by their International	65	3	2	0	0	343	98	4.9



PRINCIPAL

Sri Venkateswara College of
Engineering and Technology
Thirupachur, Tiruvallur - 631 203



SRI VENKATESWARA

COLLEGE OF ENGINEERING AND TECHNOLOGY

Thirupachur-631203, Tiruvallur TK & DT

Approved by AICTE New Delhi & Affiliated to Anna University, Chennai
(A Telugu Minority Institution)

	recognition to the Courses								
7	Rate the Size of syllabus in terms of the load on the student	60	5	5	0	0	335	95.71	4.79
8	Rate the courses in terms of extra learning or self-learning considering the design of the courses	65	3	2	0	0	343	98	4.9
9	Rate the evaluation scheme designed for each of the course	67	2	1	0	0	346	98.86	4.94
10	Rate the objectives stated for each of the course	68	1	1	0	0	347	99.14	4.96
11	Rate the composition of the courses in terms of Basic science, Engineering science, Humanities, Discipline core, discipline elective, open elective, project	69	1	0	0	0	349	99.71	4.98
12	Rate the domain used for designing the experiments for the LAB components	70	0	0	0	0	350	100	5
13	Rate the experiments in relation to the real life Applications	67	1	1	1	0	344	98.29	4.91
14	Rate the Library ambience is good for informal and self-learning.	70	0	0	0	0	350	100	5
15	Rate the Library is having good number of text and reference books and additional books for competitive exams.	65	2	1	1	0	338	96.57	4.83



PRINCIPAL
Sri Venkateswara College of
Engineering and Technology,
Thirupachur, Tiruvallur - 631 203



SRI VENKATESWARA

COLLEGE OF ENGINEERING AND TECHNOLOGY

Thirupachur-631203, Tiruvallur TK & DT

Approved by AICTE New Delhi & Affiliated to Anna University, Chennai
(A Telugu Minority Institution)

16	Rate the High speed Internet facilities are available in the Campus.	70	0	0	0	0	350	100	5
17	Rate the Co and Extra Curricular facilities give good opportunities for students to explore themselves.	64	3	2	1	0	340	97.14	4.86
18	Rate the Canteen & Dinning space are adequate.	70	0	0	0	0	350	100	5
19	Rate the Quality, Clean drinking water is available.	70	0	0	0	0	350	100	5
20	Rate the Toilets/Washrooms are hygienic and well maintained.	68	1	1	0	0	347	99.14	4.95
21	Rate the buildings and Class Rooms are accessible to differently abled persons.	70	0	0	0	0	350	100	5
22	Rate the Institute is having good hostel and mess facilities.	67	1	1	1	0	344	98.28	4.91
23	Rate the Institute is having good Gym and Yoga Centers.	66	2	2	0	0	344	98.28	4.91
24	Rate the Institute is having good transport facilities and is also accessible through public transport.	70	0	0	0	0	350	100	5
25	Rate the Campus is green, plastic-free and eco-friendly.	70	0	0	0	0	350	100	5



PRINCIPAL
Sri Venkateswara College of
Engineering and Technology
Thirupachur, Tiruvallur - 631 203



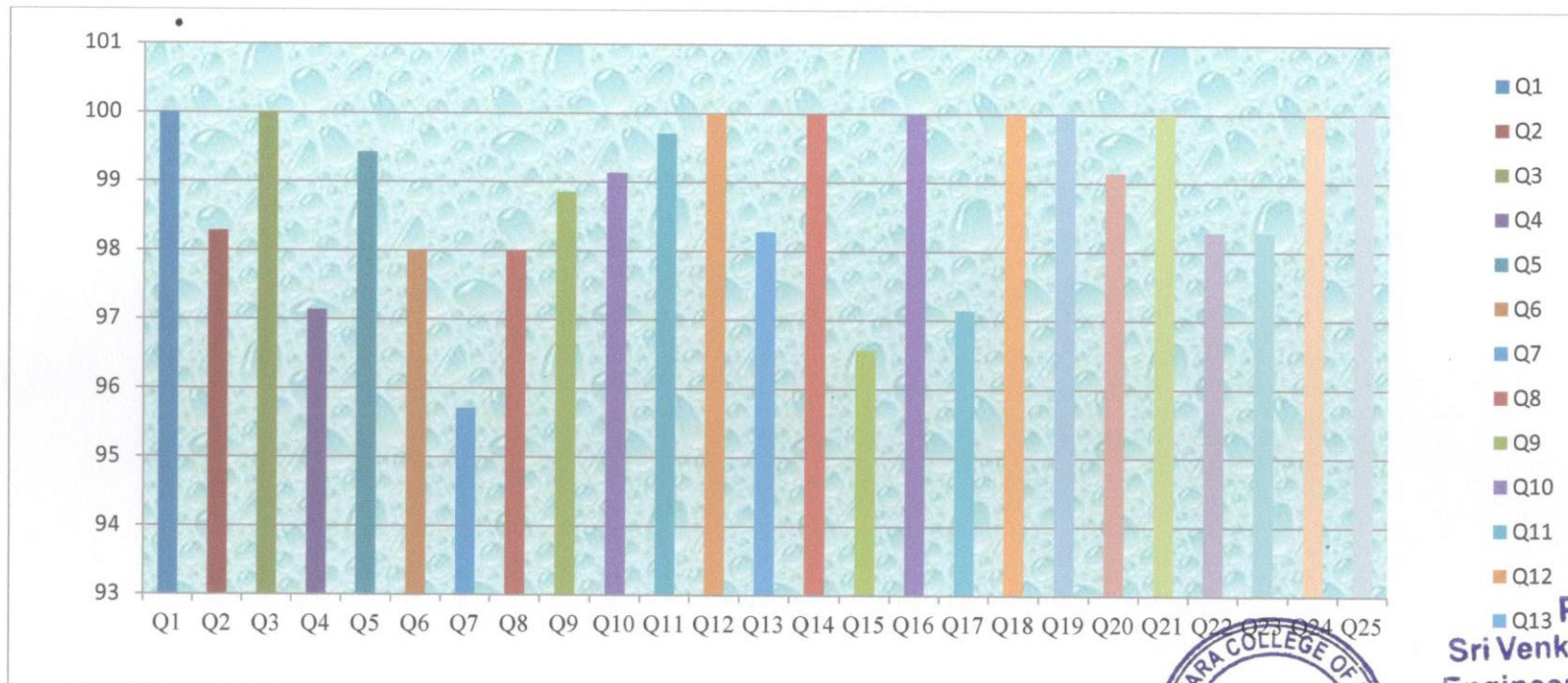
SRI VENKATESWARA

COLLEGE OF ENGINEERING AND TECHNOLOGY

Thirupachur-631203, Tiruvallur TK & DT
Approved by AICTE New Delhi & Affiliated to Anna University, Chennai
(A Telugu Minority Institution)

STUDENT FEEDBACK ANALYSIS PROGRAM CODE & NAME: 104- CIVIL ENGINEERING ACADEMIC YEAR: 2022-2023

STUDENT FEEDBACK ANALYSIS (CE) (PERCENTAGE)



[Signature]
PRINCIPAL
Sri Venkateswara College of
Engineering and Technology
Thirupachur, Tiruvallur - 631 203

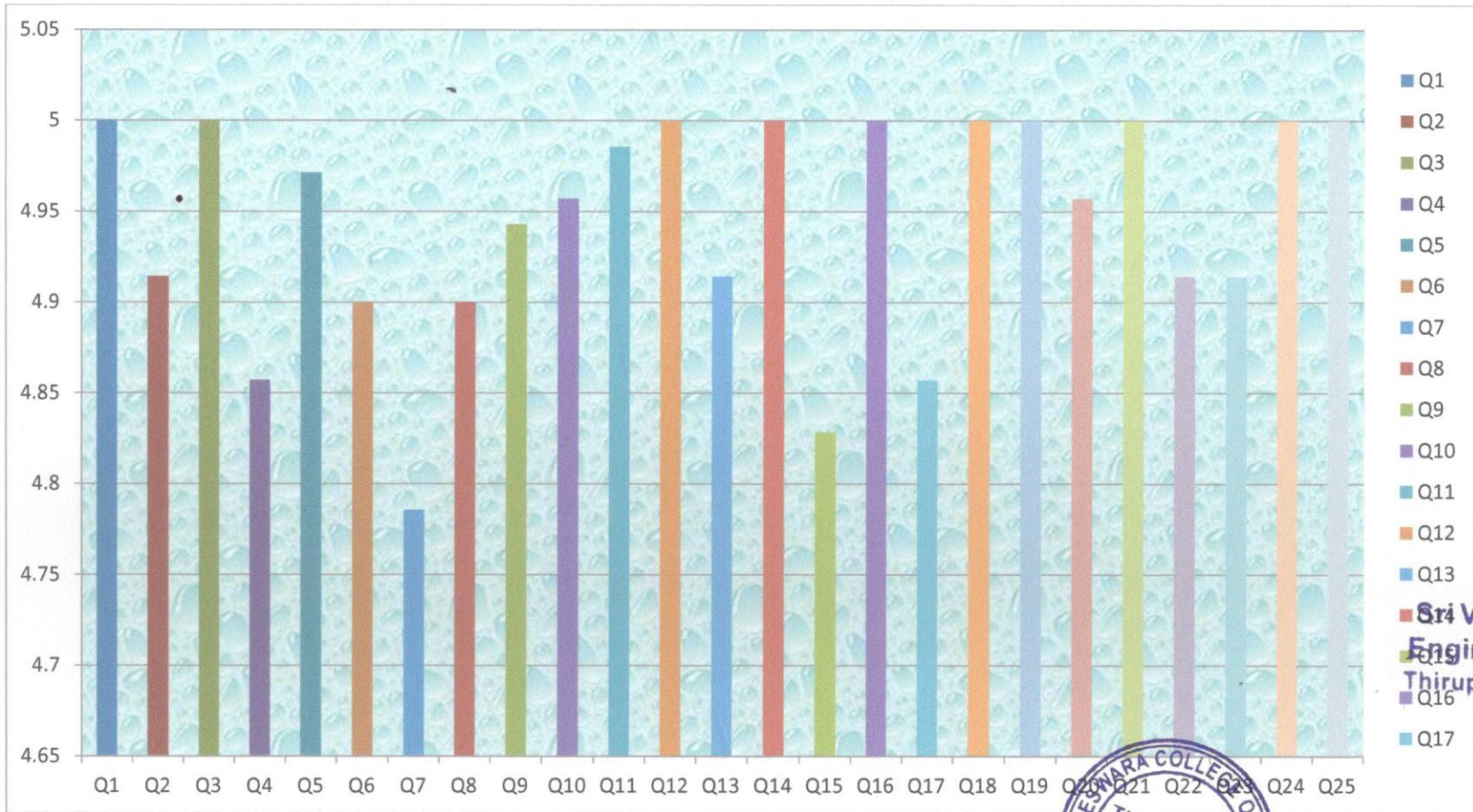


SRI VENKATESWARA

COLLEGE OF ENGINEERING AND TECHNOLOGY

Thirupachur-631203, Tiruvallur TK & DT
Approved by AICTE New Delhi & Affiliated to Anna University, Chennai
(A Telugu Minority Institution)

STUDENT FEEDBACK ANALYSIS (CE) (3-SCALE WEIGHTAGE)



PRINCIPAL

Sri Venkateswara College
Engineering and Techno
Thirupachur, Thiruvallur - 6





SRI VENKATESWARA

COLLEGE OF ENGINEERING AND TECHNOLOGY

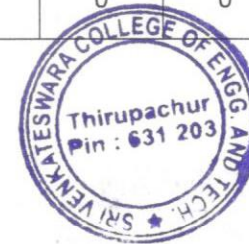
Thirupachur-631203, Tiruvallur TK & DT

Approved by AICTE New Delhi & Affiliated to Anna University, Chennai
(A Telugu Minority Institution)

STUDENT FEEDBACK ANALYSIS

PROGRAM CODE & NAME: 104-COMPUTER SCIENCE ENGINEERING
ACADEMIC YEAR: 2022-2023

S.NO	QUESTIONNAIRE	EXCELLENT (5)	VERY GOOD (4)	GOOD (3)	FAIR (2)	POOR (1)	Total weight age	%	5-scale weight age
1	Rate the sequence of the Courses that you have studied are in sequence to what you have studied in the previous semester?	178	0	0	0	0	890	100	5
2	Rate the syllabus of the courses that you have studied in relation to the competencies expected out of the course	177	1	0	0	0	889	99.88	4.99
3	Rate the relevance of the units in Syllabus relevant to the course	178	0	0	0	0	890	100	5
4	Rate the distribution of the contact hours among the course components (Lecture-Tutorial Lectures- Practical)	177	1	0	0	0	889	99.88	4.99
5	Rate the electives offered in relation to the Technological advancements	177	0	1	0	0	888	99.77	4.98
6	Rate the relevance of the Text Books and reference books by their	163	7	8	0	0	867	97.41	4.87



PRINCIPAL
Sri Venkateswara College of
Engineering and Technology,
Thirupachur, Tiruvallur, Tamil Nadu-631203.



SRI VENKATESWARA

COLLEGE OF ENGINEERING AND TECHNOLOGY

Thirupachur-631203, Tiruvallur TK & DT

Approved by AICTE New Delhi & Affiliated to Anna University, Chennai
(A Telugu Minority Institution)

	International recognition to the Courses								
7	Rate the Size of syllabus in terms of the load on the student	162	2	3	0	0	827	92.92	4.64
8	Rate the courses in terms of extra learning or self-learning considering the design of the courses	163	8	7	0	0	868	97.52	4.87
9	Rate the evaluation scheme designed for each of the course	165	7	6	0	0	871	97.86	4.89
10	Rate the objectives stated for each of the course	163	8	7	0	0	868	97.52	4.87
11	Rate the composition of the courses in terms of Basic science, Engineering science, Humanities, Discipline core, discipline elective, open elective, project	165	2	0	0	0	833	93.59	4.67
12	Rate the domain used for designing the experiments for the LAB components	165	1	1	0	0	832	93.48	4.67
13	Rate the experiments in relation to the real life Applications	162	2	3	0	0	827	92.92	4.64
14	Rate the Library ambience is good for informal and self-learning.	163	7	8	0	0	867	97.41	4.87
15	Rate the Library is having good number of text and reference books and additional books for competitive exams.	162	3	2	0	0	828	93.03	4.65



PRINCIPAL
Sri Venkateswara College of
Engineering and Technology,
Thirupachur, Tiruvallur - 631 203



SRI VENKATESWARA

COLLEGE OF ENGINEERING AND TECHNOLOGY

Thirupachur-631203, Tiruvallur TK & DT
Approved by AICTE New Delhi & Affiliated to Anna University, Chennai
(A Telugu Minority Institution)

16	Rate the High speed Internet facilities are available in the Campus.	163	6	9	0	0	866	97.30	4.87
17	Rate the Co and Extra Curricular facilities give good opportunities for students to explore themselves.	165	2	0	0	0	833	93.59	4.67
18	Rate the Canteen & Dinning space are adequate.	164	5	9	0	0	867	97.41	4.87
19	Rate the Quality, Clean drinking water is available.	163	7	8	0	0	867	97.41	4.87
20	Rate the Toilets/Washrooms are hygienic and well maintained.	162	3	2	0	0	828	93.03	4.65
21	Rate the buildings and Class Rooms are accessible to differently abled persons.	162	3	2	0	0	828	93.03	4.65
22	Rate the Institute is having good hostel and mess facilities.	162	3	2	0	0	828	93.03	4.65
23	Rate the Institute is having good Gym and Yoga Centers.	162	3	2	0	0	828	93.03	4.65
24	Rate the Institute is having good transport facilities and is also accessible through public transport.	178	0	0	0	0	890	100	5
25	Rate the Campus is green, plastic-free and eco-friendly.	178	0	0	0	0	890	100	5



PRINCIPAL
Sri Venkateswara College of
Engineering and Technology,
Thirupachur, Tiruvallur - 631 203.



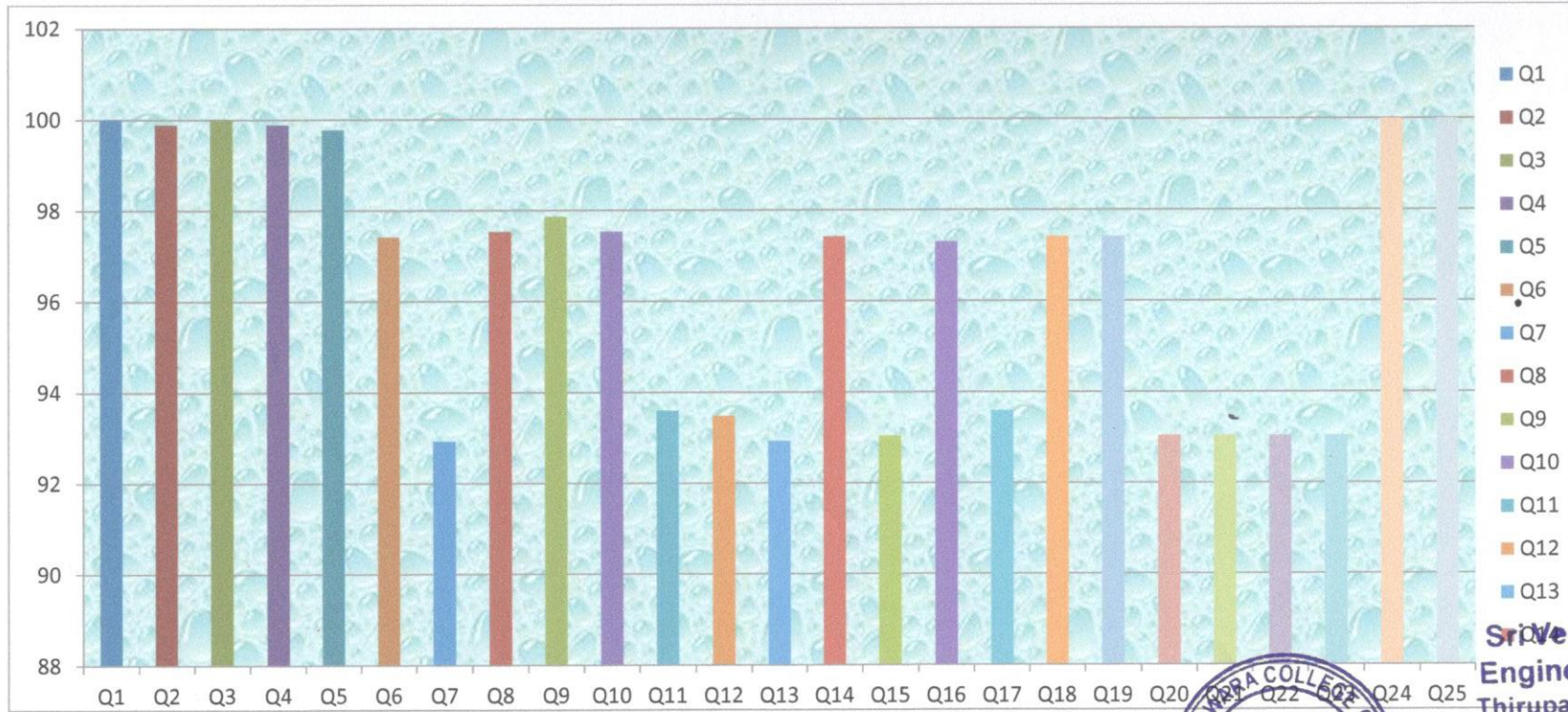
SRI VENKATESWARA

COLLEGE OF ENGINEERING AND TECHNOLOGY

Thirupachur-631203, Tiruvallur TK & DT
Approved by AICTE New Delhi & Affiliated to Anna University, Chennai
(A Telugu Minority Institution)

STUDENT FEEDBACK ANALYSIS
PROGRAM CODE & NAME: 104- COMPUTER SCIENCE ENGINEERING
ACADEMIC YEAR: 2022-2023

STUDENT FEEDBACK ANALYSIS (CSE) (PERCENTAGE)



PRINCIPAL

**Sri Venkateswara College of
Engineering and Technology,
Thirupachur, Thiruvallur - 631 203**



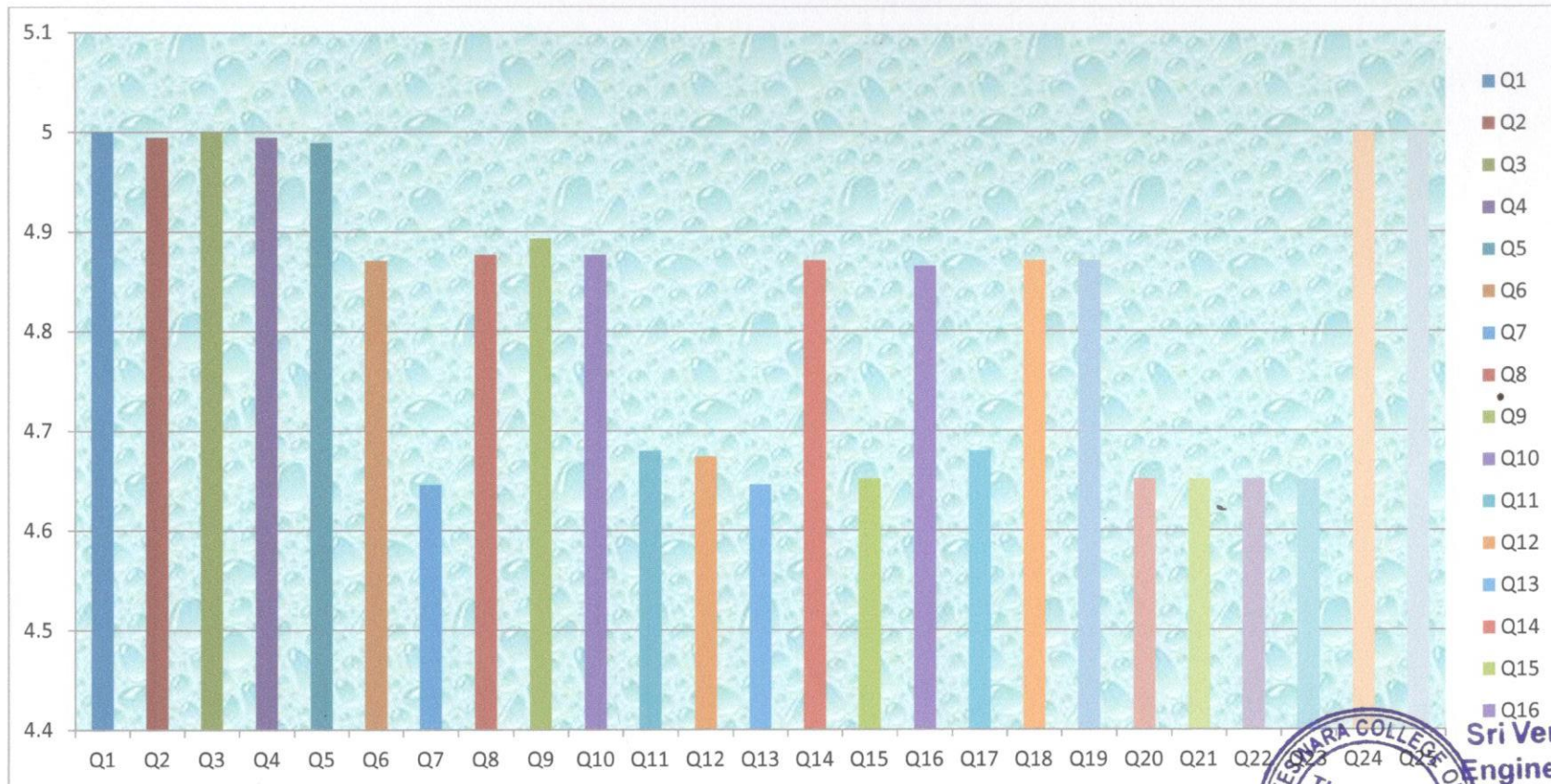


SRI VENKATESWARA

COLLEGE OF ENGINEERING AND TECHNOLOGY

Thirupachur-631203, Tiruvallur TK & DT
Approved by AICTE New Delhi & Affiliated to Anna University, Chennai
(A Telugu Minority Institution)

STUDENT FEEDBACK ANALYSIS (CSE) (5-SCALE WEIGHTAGE)



PRINCIPAL

Sri Venkateswara College of
Engineering and Technology,
Thirupachur, Tiruvallur - 631 203





SRI VENKATESWARA

COLLEGE OF ENGINEERING AND TECHNOLOGY

Thirupachur-631203, Tiruvallur TK & DT
Approved by AICTE New Delhi & Affiliated to Anna University, Chennai
(A Telugu Minority Institution)

PROGRAM CODE & NAME: 106-ELECTRONICS & COMMUNICATION ENGINEERING
ACADEMIC YEAR: 2022-2023

S.NO	QUESTIONNAIRE	EXCELLENT (5)	VERY GOOD (4)	GOOD (3)	FAIR (2)	POOR (1)	Total weight age	%	5-scale weight age
1	Rate the sequence of the Courses that you have studied are in sequence to what you have studied in the previous semester?	200	0	0	0	0	1000	100	5
2	Rate the syllabus of the courses that you have studied in relation to the competencies expected out of the course	199	0	1	0	0	998	99.8	4.99
3	Rate the relevance of the units in Syllabus relevant to the course	198	1	1	0	0	997	99.7	4.98
4	Rate the distribution of the contact hours among the course components (Lecture-Tutorial Lectures- Practical)	195	3	1	1	0	992	99.2	4.96
5	Rate the electives offered in relation to the Technological advancements	197	1	2	0	0	995	99.5	4.97
6	Rate the relevance of the Text Books and reference books by their International recognition to the Courses	199	1	0	0	0	999	99.9	4.99



PRINCIPAL
Sri Venkateswara College of
Engineering and Technology,
Thirupachur, Tiruvallur - 631 203.



SRI VENKATESWARA

COLLEGE OF ENGINEERING AND TECHNOLOGY

Thirupachur-631203, Tiruvallur TK & DT
Approved by AICTE New Delhi & Affiliated to Anna University, Chennai
(A Telugu Minority Institution)

7	Rate the Size of syllabus in terms of the load on the student	190	5	5	0	0	985	98.5	4.92
8	Rate the courses in terms of extra learning or self-learning considering the design of the courses	192	4	4	0	0	988	98.8	4.94
9	Rate the evaluation scheme designed for each of the course	190	1	4	5	0	976	97.6	4.88
10	Rate the objectives stated for each of the course	197	1	1	1	0	994	99.4	4.97
11	Rate the composition of the courses in terms of Basic science, Engineering science, Humanities, Discipline core, discipline elective, open elective, project	195	2	1	2	0	990	99	4.95
12	Rate the domain used for designing the experiments for the LAB components	200	0	0	0	0	1000	100	5
13	Rate the experiments in relation to the real life Applications	199	1	0	0	0	999	99.9	4.99
14	Rate the Library ambience is good for informal and self-learning.	199	1	0	0	0	999	99.9	4.99
15	Rate the Library is having good number of text and reference books and additional books for competitive exams.	195	2	1	2	0	990	99	4.95
16	Rate the High speed Internet facilities are	200	0	0	0	0	1000	100	5



PRINCIPAL
Sri Venkateswara College of
Engineering and Technology,
Thirupachur, Tiruvallur - 631 203.

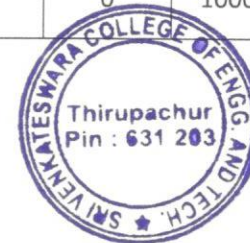


SRI VENKATESWARA

COLLEGE OF ENGINEERING AND TECHNOLOGY

Thirupachur-631203, Tiruvallur TK & DT
 Approved by AICTE New Delhi & Affiliated to Anna University, Chennai
 (A Telugu Minority Institution)

	available in the Campus.								
17	Rate the Co and Extra Curricular facilities give good opportunities for students to explore themselves.	190	5	0	5	0	980	98	4.9
18	Rate the Canteen & Dinning space are adequate.	200	0	0	0	0	1000	100	5
19	Rate the Quality, Clean drinking water is available.	200	0	0	0	0	1000	100	5
20	Rate the Toilets/Washrooms are hygienic and well maintained.	197	1	2	0	0	995	99.5	4.97
21	Rate the buildings and Class Rooms are accessible to differently abled persons.	200	0	0	0	0	1000	100	5
22	Rate the Institute is having good hostel and mess facilities.	199	1	0	0	0	999	99.9	4.99
23	Rate the Institute is having good Gym and Yoga Centers.	195	2	2	1	0	991	99.1	4.95
24	Rate the Institute is having good transport facilities and is also accessible through public transport.	200	0	0	0	0	1000	100	5
25	Rate the Campus is green, plastic-free and eco-friendly.	200	0	0	0	0	1000	100	5




PRINCIPAL
 Sri Venkateswara College of
 Engineering and Technology,
 Thirupachur, Tiruvallur - 631 203.



SRI VENKATESWARA

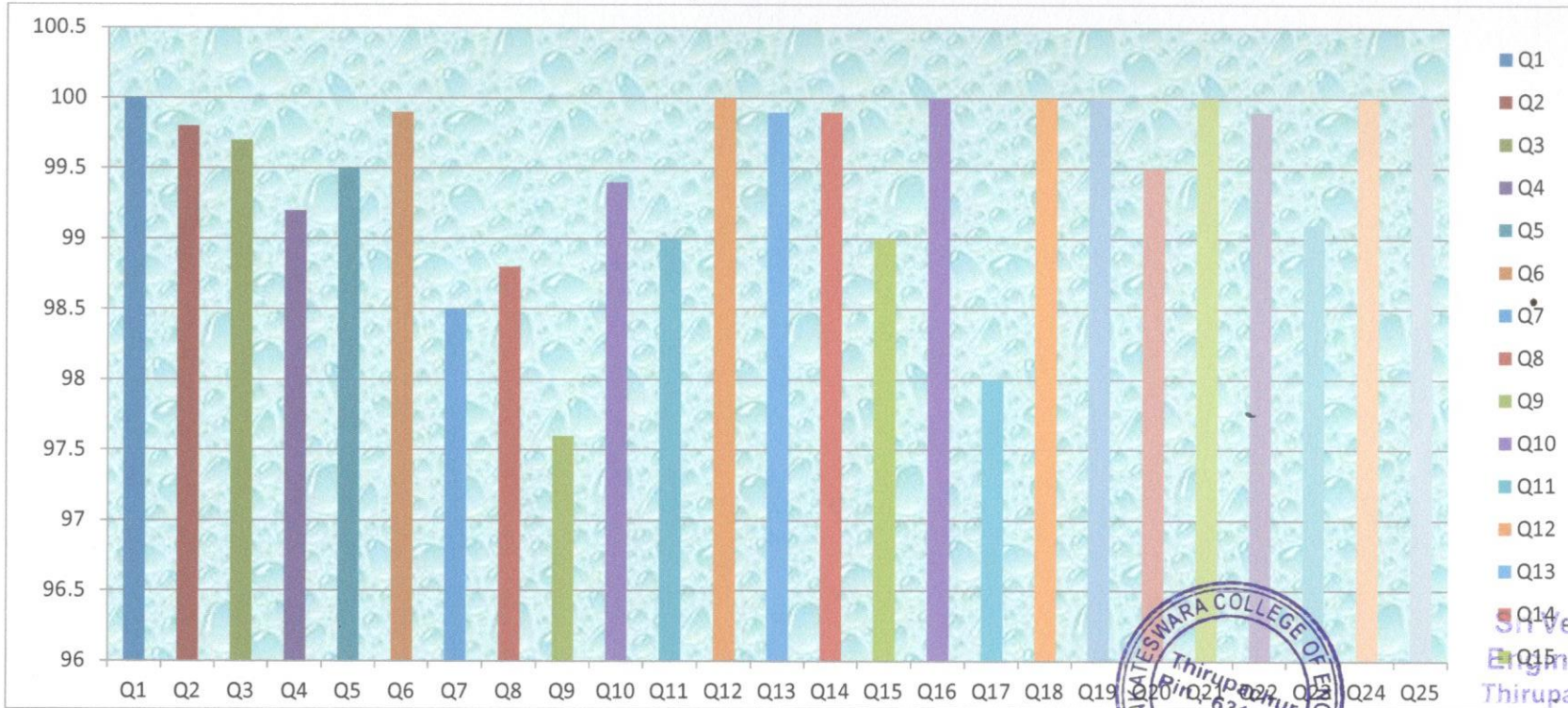
COLLEGE OF ENGINEERING AND TECHNOLOGY

Thirupachur-631203, Tiruvallur TK & DT
Approved by AICTE New Delhi & Affiliated to Anna University, Chennai
(A Telugu Minority Institution)

STUDENT FEEDBACK ANALYSIS

PROGRAM CODE & NAME: 106-ELECTRONICS & COMMUNICATION ENGINEERING
ACADEMIC YEAR: 2022-2023

STUDENT FEEDBACK ANALYSIS (ECE) (PERCENTAGE)



PRINCIPAL

Sri Venkateswara College of
Engineering and Technology,
Thirupachur, Thiruvallur - 631 203



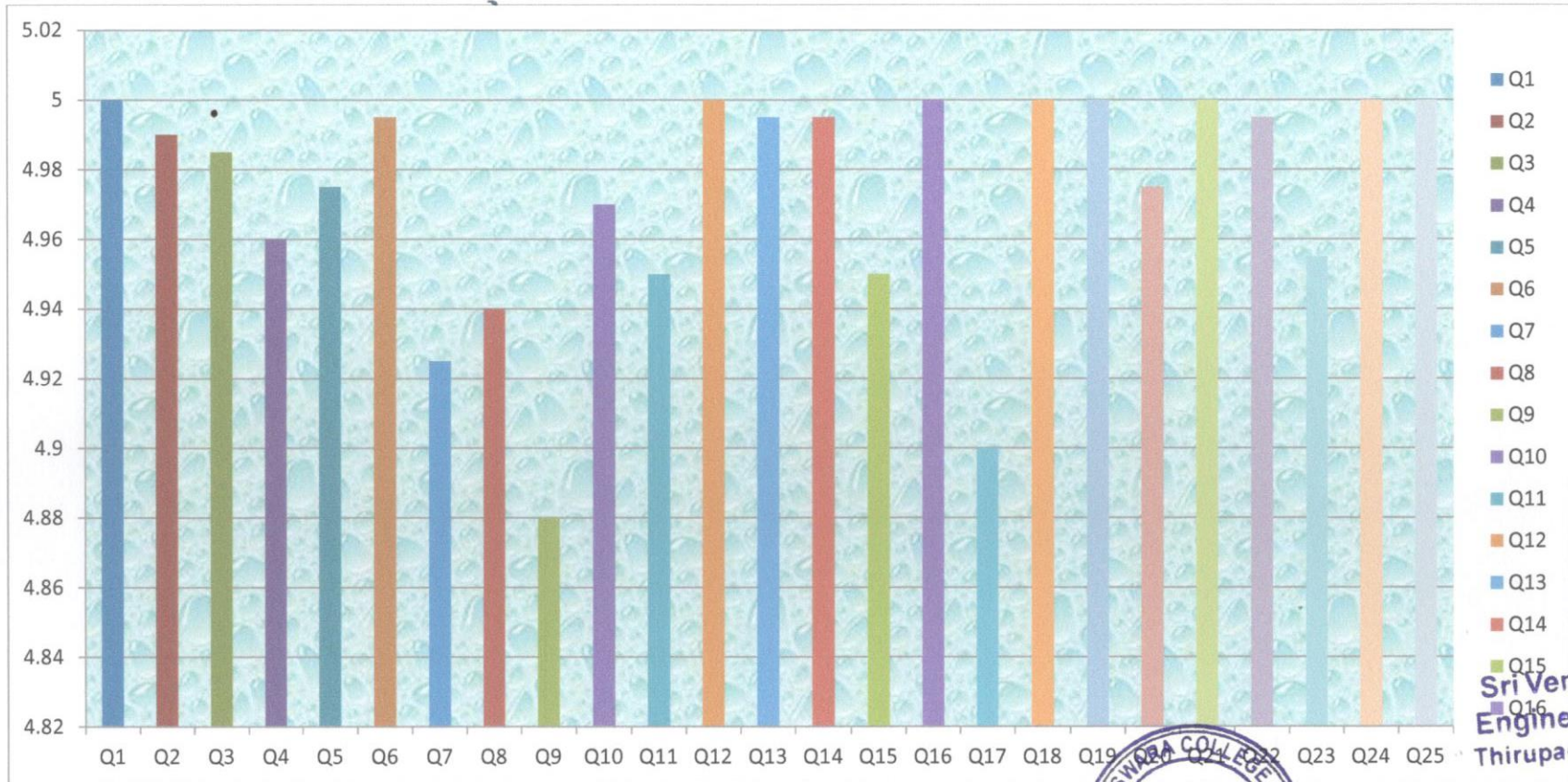



SRI VENKATESWARA

COLLEGE OF ENGINEERING AND TECHNOLOGY

Thirupachur-631203, Tiruvallur TK & DT
Approved by AICTE New Delhi & Affiliated to Anna University, Chennai
(A Telugu Minority Institution)

STUDENT FEEDBACK ANALYSIS (ECE) (3-SCALE WEIGHTAGE)




PRINCIPAL
Sri Venkateswara Coll
Engineering and Tech
Thirupachur, Tiruvallur -



SRI VENKATESWARA

COLLEGE OF ENGINEERING AND TECHNOLOGY

Thirupachur-631203, Tiruvallur TK & DT
Approved by AICTE New Delhi & Affiliated to Anna University, Chennai
(A Telugu Minority Institution)

PROGRAM CODE & NAME: 114-MECHANICAL ENGINEERING
ACADEMIC YEAR: 2022-2023

S.NO	QUESTIONNAIRE	EXCELLENT (5)	VERY GOOD (4)	GOOD (3)	FAIR (2)	POOR (1)	Total weight age	%	5-scale weight age
1	Rate the sequence of the Courses that you have studied are in sequence to what you have studied in the previous semester?	270	0	0	0	0	1350	100	5
2	Rate the syllabus of the courses that you have studied in relation to the competencies expected out of the course	260	5	4	1	0	1334	98.81	4.94
3	Rate the relevance of the units in Syllabus relevant to the course	270	0	0	0	0	1350	100	5
4	Rate the distribution of the contact hours among the course components (Lecture-Tutorial Lectures- Practical)	250	7	10	3	0	1314	97.33	4.86
5	Rate the electives offered in relation to the Technological advancements	262	4	1	3	0	1335	98.88	4.94
6	Rate the relevance of the Text Books and reference books by their International recognition to the Courses	270	0	0	0	0	1350	100	5



PRINCIPAL
Sri Venkateswara College of
Engineering and Technology,
Thirupachur, Tiruvallur - 631 203



SRI VENKATESWARA

COLLEGE OF ENGINEERING AND TECHNOLOGY

Thirupachur-631203, Tiruvallur TK & DT

Approved by AICTE New Delhi & Affiliated to Anna University, Chennai
(A Telugu Minority Institution)

7	Rate the Size of syllabus in terms of the load on the student	250	9	5	6	0	1313	97.25	4.86
8	Rate the courses in terms of extra learning or self-learning considering the design of the courses	260	4	4	1	0	1330	98.51	4.92
9	Rate the evaluation scheme designed for each of the course	240	10	11	9	0	1291	95.62	4.78
10	Rate the objectives stated for each of the course	265	2	3	0	0	1342	99.40	4.97
11	Rate the composition of the courses in terms of Basic science, Engineering science, Humanities, Discipline core, discipline elective, open elective, project	270	0	0	0	0	1350	100	5
12	Rate the domain used for designing the experiments for the LAB components	269	1	0	0	0	1349	99.92	4.99
13	Rate the experiments in relation to the real life Applications	265	4	1	0	0	1344	99.55	4.97
14	Rate the Library ambience is good for informal and self-learning.	270	0	0	0	0	1350	100	5
15	Rate the Library is having good number of text and reference books and additional books for competitive exams.	268	0	0	2	0	1344	99.55	4.97
16	Rate the High speed Internet facilities are	270	0	0	0	0	1350	100	5



PRINCIPAL
Sri Venkateswara College of
Engineering and Technology,
Thirupachur, Thiruvallur - 631 203.



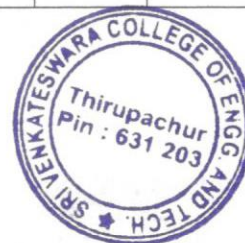
SRI VENKATESWARA

COLLEGE OF ENGINEERING AND TECHNOLOGY

Thirupachur-631203, Tiruvallur TK & DT

Approved by AICTE New Delhi & Affiliated to Anna University, Chennai
(A Telugu Minority Institution)

	available in the Campus.								
17	Rate the Co and Extra Curricular facilities give good opportunities for students to explore themselves.	250	15	10	5	0	1350	100	5
18	Rate the Canteen & Dinning space are adequate.	270	0	0	0	0	1350	100	5
19	Rate the Quality, Clean drinking water is available.	270	0	0	0	0	1350	100	5
20	Rate the Toilets/Washrooms are hygienic and well maintained.	265	2	3	0	0	1342	99.40	4.97
21	Rate the buildings and Class Rooms are accessible to differently abled persons.	270	0	0	0	0	1350	100	5
22	Rate the Institute is having good hostel and mess facilities.	260	1	9	0	0	1331	98.59	4.92
23	Rate the Institute is having good Gym and Yoga Centers.	260	5	5	0	0	1335	98.88	4.944
24	Rate the Institute is having good transport facilities and is also accessible through public transport.	270	0	0	0	0	1350	100	5
25	Rate the Campus is green, plastic-free and eco-friendly.	270	0	0	0	0	1350	100	5



PRINCIPAL
Sri Venkateswara College of
Engineering and Technology
Thirupachur, Tiruvallur - 631 203

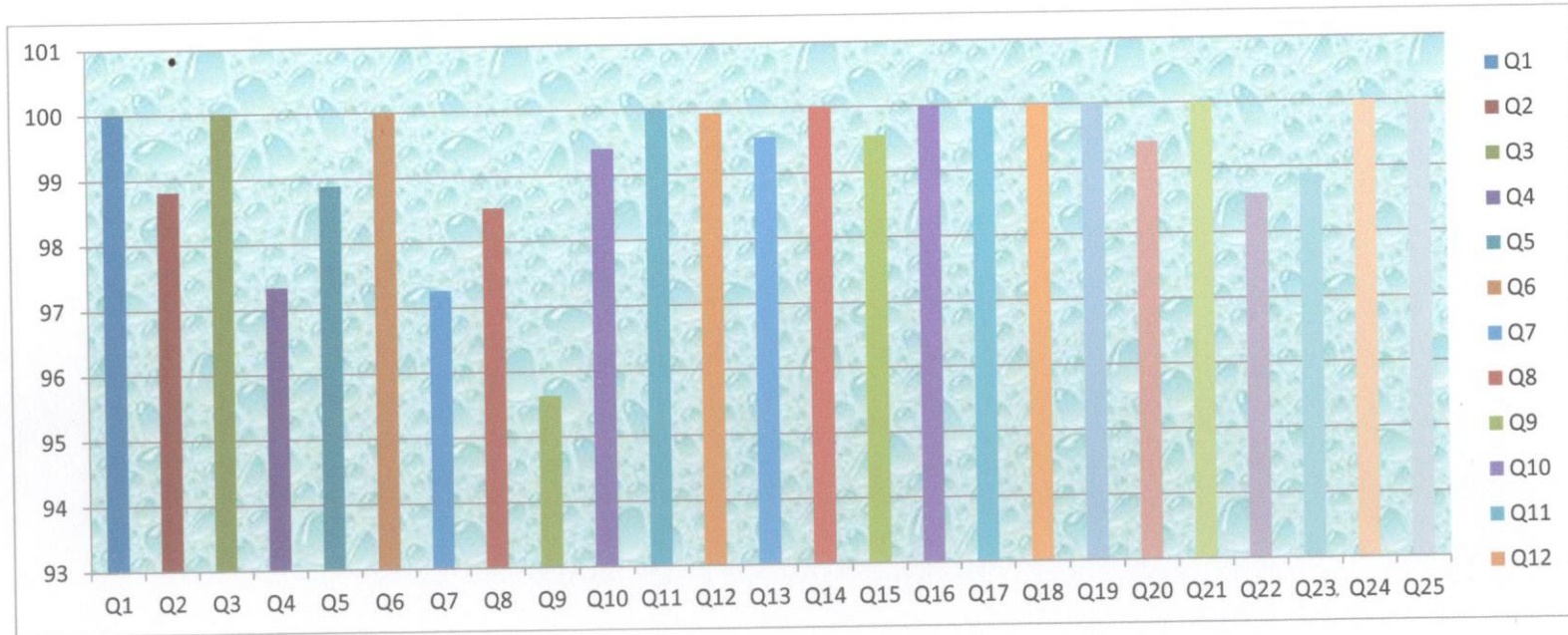


SRI VENKATESWARA

COLLEGE OF ENGINEERING AND TECHNOLOGY

Thirupachur-631203, Tiruvallur TK & DT
Approved by AICTE New Delhi & Affiliated to Anna University, Chennai
(A Telugu Minority Institution)

STUDENT FEEDBACK ANALYSIS
PROGRAM CODE & NAME: 114-MECHANICAL ENGINEERING
ACADEMIC YEAR: 2022-2023
STUDENT FEEDBACK ANALYSIS (MECH)
(PERCENTAGE)



STUDENT FEEDBACK ANALYSIS (MECH)



PRINCIPAL
Sri Venkateswara College of
Engineering and Technology
Thirupachur, Tiruvallur - 631 203

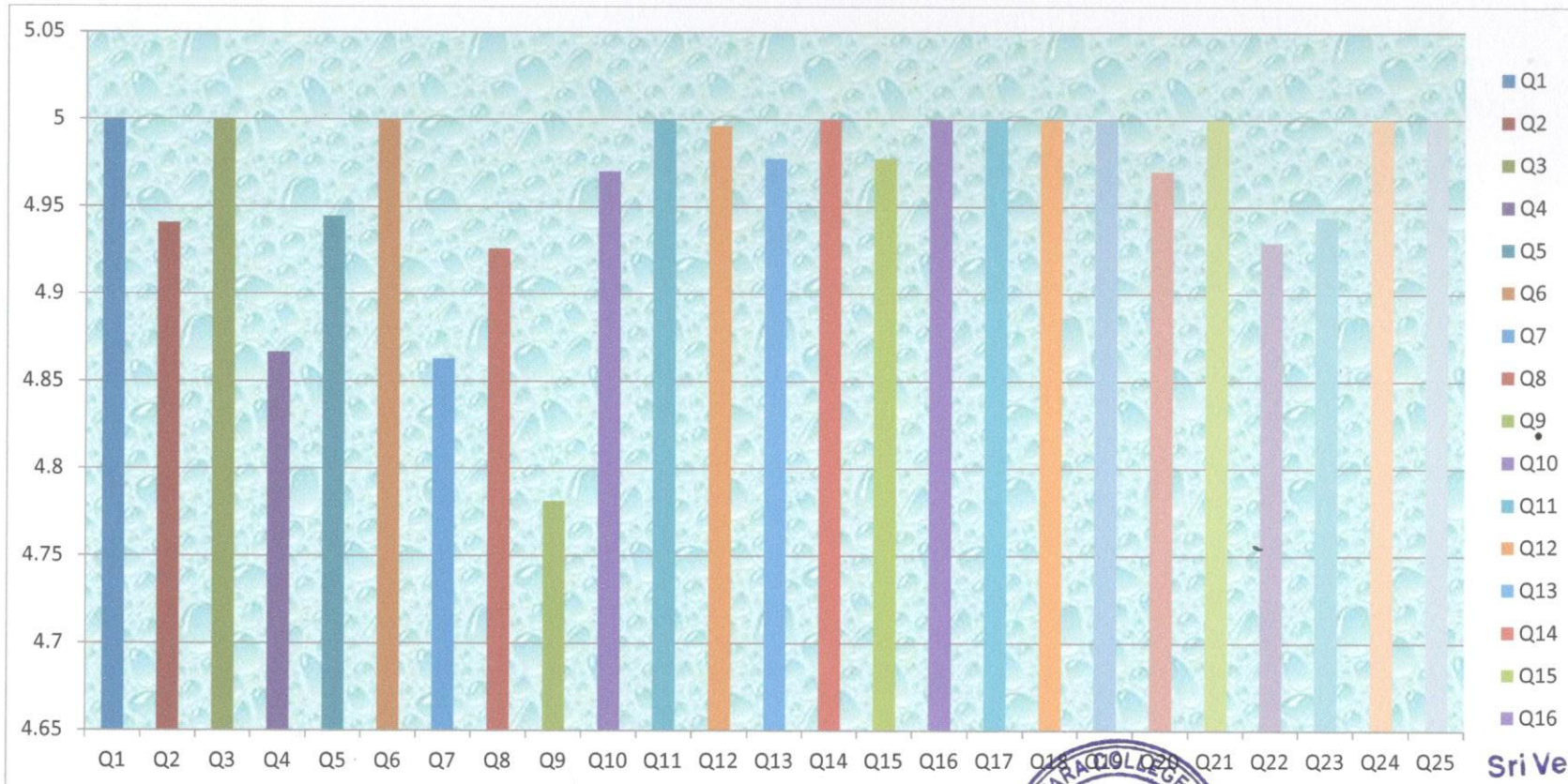


SRI VENKATESWARA

COLLEGE OF ENGINEERING AND TECHNOLOGY

Thirupachur-631203, Tiruvallur TK & DT
Approved by AICTE New Delhi & Affiliated to Anna University, Chennai
(A Telugu Minority Institution)

STUDENT FEEDBACK ANALYSIS (MECH) (3-SCALE WEIGHTAGE)



PRINCIPAL

Sri Venkateswara College of
Engineering and Technology,
Thirupachur, Tiruvallur - 631 203



SRI VENKATESWARA

COLLEGE OF ENGINEERING AND TECHNOLOGY

Thirupachur-631203, Tiruvallur TK & DT

Approved by AICTE New Delhi & Affiliated to Anna University, Chennai
(A Telugu Minority Institution)

PROGRAM CODE & NAME: 105-ELECTRICAL & ELECTRONICS ENGINEERING
ACADEMIC YEAR: 2022-2023

S.NO	QUESTIONNAIRE	EXCELLENT (5)	VERY GOOD (4)	GOOD (3)	FAIR (2)	POOR (1)	Total weight age	%	5-scale weight age
1	Rate the sequence of the Courses that you have studied are in sequence to what you have studied in the previous semester?	140	0	0	0	0	700	100	5
2	Rate the syllabus of the courses that you have studied in relation to the competencies expected out of the course	135	2	2	1	0	691	98.71	4.93
3	Rate the relevance of the units in Syllabus relevant to the course	140	0	0	0	0	700	100	5
4	Rate the distribution of the contact hours among the course components (Lecture-Tutorial Lectures- Practical)	130	2	4	4	0	678	96.85	4.84
5	Rate the electives offered in relation to the Technological advancements	139	1	0	0	0	699	99.85	4.99
6	Rate the relevance of the Text Books and reference books by their International recognition to the Courses	140	0	0	0	0	700	100	5



PRINCIPAL
Sri Venkateswara College of
Engineering and Technology,
Thirupachur, Tiruvallur - 631 203.



SRI VENKATESWARA

COLLEGE OF ENGINEERING AND TECHNOLOGY

Thirupachur-631203, Tiruvallur TK & DT
Approved by AICTE New Delhi & Affiliated to Anna University, Chennai
(A Telugu Minority Institution)

7	Rate the Size of syllabus in terms of the load on the student	128	2	6	4	0	674	96.28	4.81
8	Rate the courses in terms of extra learning or self-learning considering the design of the courses	139	0	1	0	0	698	99.71	4.98
9	Rate the evaluation scheme designed for each of the course	120	4	7	9	0	655	93.57	4.67
10	Rate the objectives stated for each of the course	138	1	1	0	0	697	99.57	4.97
11	Rate the composition of the courses in terms of Basic science, Engineering science, Humanities, Discipline core, discipline elective, open elective, project	140	0	0	0	0	700	100	5
12	Rate the domain used for designing the experiments for the LAB components	140	0	0	0	0	700	100	5
13	Rate the experiments in relation to the real life Applications	130	4	1	5	0	679	97	4.85
14	Rate the Library ambience is good for informal and self-learning.	140	0	0	0	0	700	100	5
15	Rate the Library is having good number of text and reference books and additional books for competitive exams.	140	0	0	0	0	700	100	5
16	Rate the High speed Internet facilities are	140	0	0	0	0	700	100	5



PRINCIPAL
Sri Venkateswara College of
Engineering and Technology,
Thirupachur, Tiruvallur - 631 203



SRI VENKATESWARA

COLLEGE OF ENGINEERING AND TECHNOLOGY

Thirupachur-631203, Tiruvallur TK & DT
Approved by AICTE New Delhi & Affiliated to Anna University, Chennai
(A Telugu Minority Institution)

	available in the Campus.								
17	Rate the Co and Extra Curricular facilities give good opportunities for students to explore themselves.	130	0	5	5	0	675	96.42	4.82
18	Rate the Canteen & Dinning space are adequate.	139	1	0	0	0	699	99.85	4.99
19	Rate the Quality, Clean drinking water is available.	140	0	0	0	0	700	100	5
20	Rate the Toilets/Washrooms are hygienic and well maintained.	135	2	1	1	0	688	98.28	4.91
21	Rate the buildings and Class Rooms are accessible to differently abled persons.	139	1	0	0	0	699	99.85	4.99
22	Rate the Institute is having good hostel and mess facilities.	140	0	0	0	0	700	100	5
23	Rate the Institute is having good Gym and Yoga Centers.	130	5	5	0	0	685	97.85	4.89
24	Rate the Institute is having good transport facilities and is also accessible through public transport.	140	0	0	0	0	700	100	5
25	Rate the Campus is green, plastic-free and eco-friendly.	140	0	0	0	0	700	100	5




PRINCIPAL
Sri Venkateswara College of
Engineering and Technology,
Thirupachur, Tiruvallur - 631 203.



SRI VENKATESWARA

COLLEGE OF ENGINEERING AND TECHNOLOGY

Thirupachur-631203, Tiruvallur TK & DT

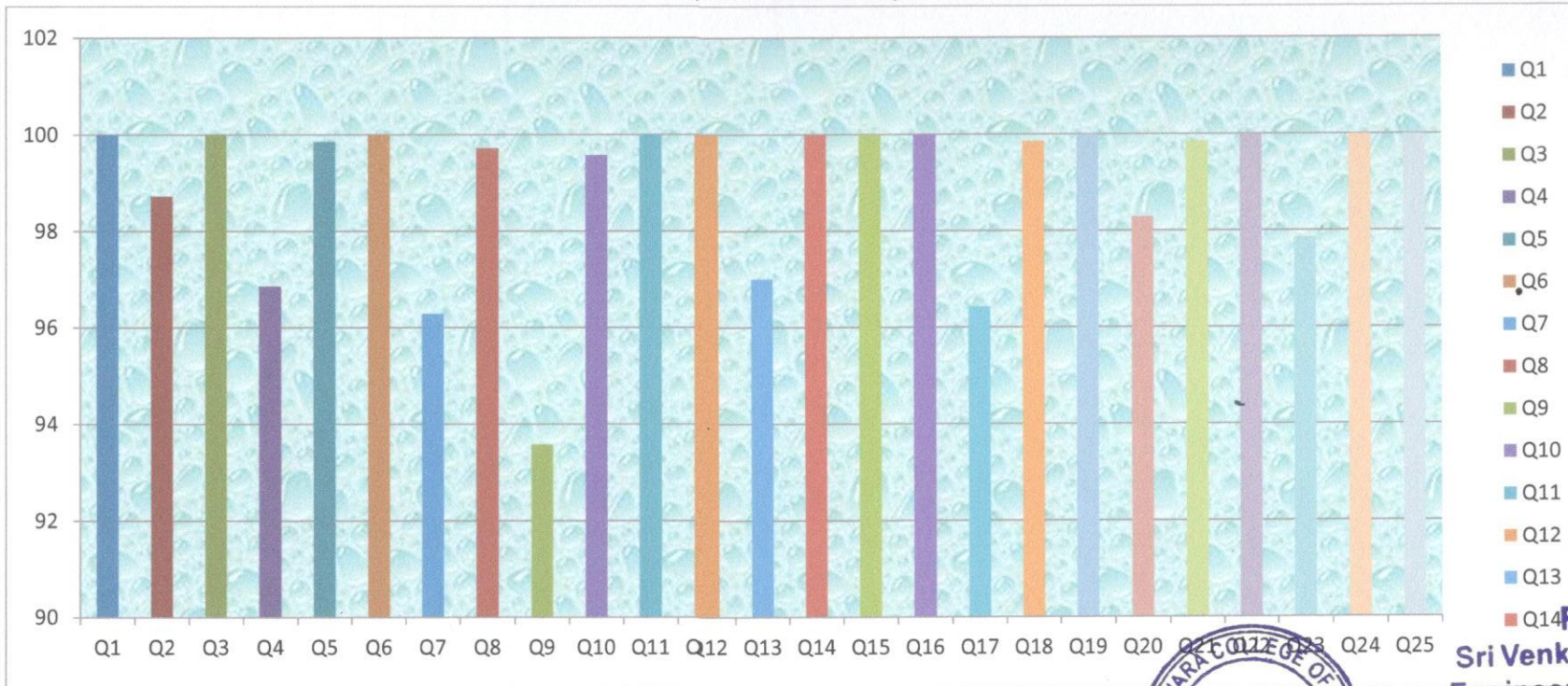
Approved by AICTE New Delhi & Affiliated to Anna University, Chennai
(A Telugu Minority Institution)

STUDENT FEEDBACK ANALYSIS

PROGRAM CODE & NAME: 105-ELECTRICAL & ELECTRONICS ENGINEERING

ACADEMIC YEAR: 2022-2023

STUDENT FEEDBACK ANALYSIS (EEE) (PERCENTAGE)



PRINCIPAL
Sri Venkateswara College of
Engineering and Technology,
Thirupachur, Tiruvallur - 631 203



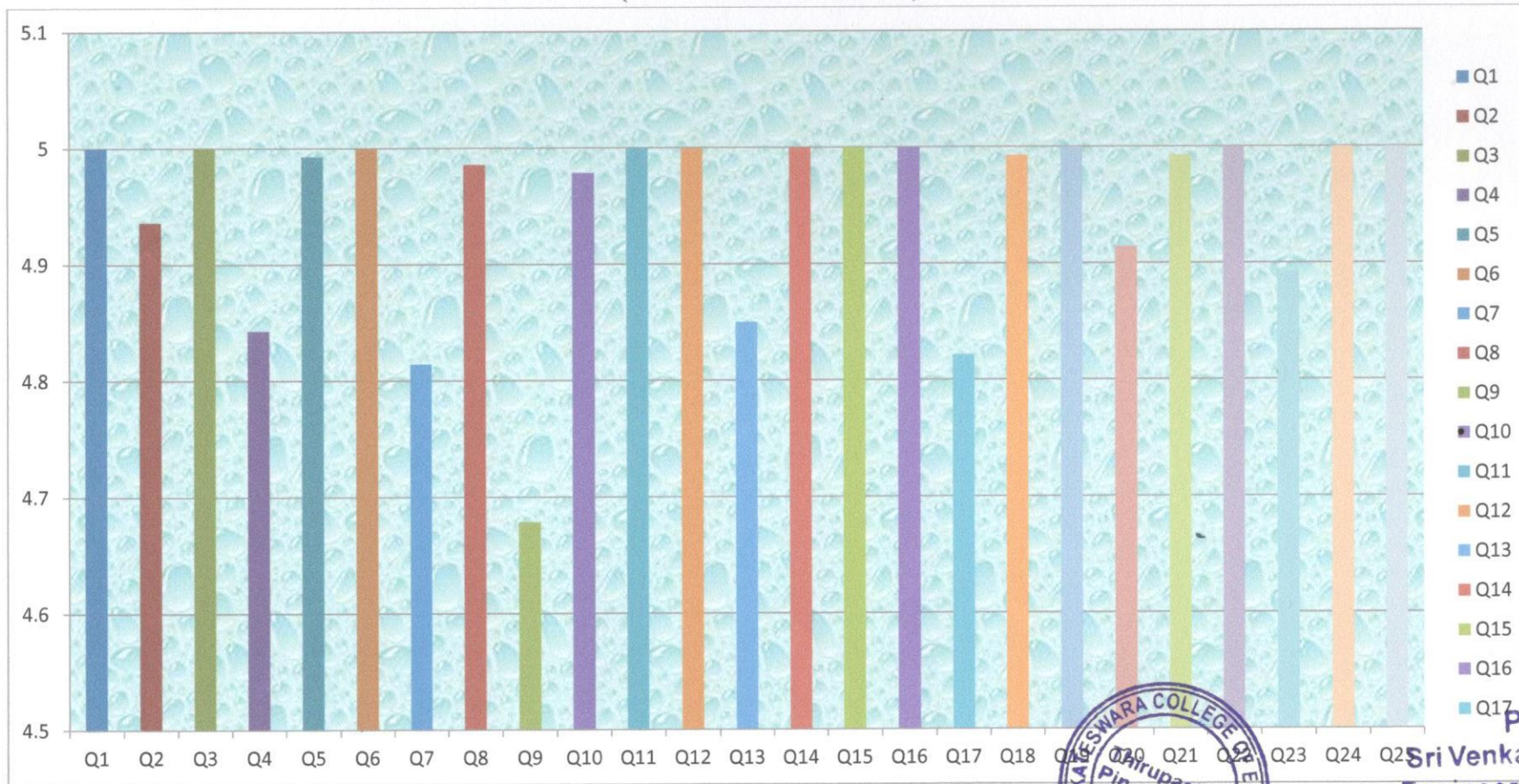


SRI VENKATESWARA

COLLEGE OF ENGINEERING AND TECHNOLOGY

Thirupachur-631203, Tiruvallur TK & DT
Approved by AICTE New Delhi & Affiliated to Anna University, Chennai
(A Telugu Minority Institution)

STUDENT FEEDBACK ANALYSIS (EEE) (3-SCALE WEIGHTAGE)



PRINCIPAL
Sri Venkateswara College of
Engineering and Technology,
Thirupachur, Thiruvallur - 631 203



SRI VENKATESWARA

COLLEGE OF ENGINEERING AND TECHNOLOGY

Thirupachur-631203, Tiruvallur TK & DT
Approved by AICTE New Delhi & Affiliated to Anna University, Chennai
(A Telugu Minority Institution)

STUDENT FEEDBACK ANALYSIS

PROGRAM CODE & NAME: 631-MASTER OF BUSINESS ADMINISTRATION
ACADEMIC YEAR: 2022-2023

S.NO	QUESTIONNAIRE	EXCELLENT (5)	VERY GOOD (4)	GOOD (3)	FAIR (2)	POOR (1)	Total weight age	%	5-scale weight age
1	Rate the sequence of the Courses that you have studied are in sequence to what you have studied in the previous semester?	195	0	0	0	0	975	100	5
2	Rate the syllabus of the courses that you have studied in relation to the competencies expected out of the course	193	1	1	0	0	972	99.6	4.98
3	Rate the relevance of the units in Syllabus relevant to the course	195	0	0	0	0	975	100	5
4	Rate the distribution of the contact hours among the course components (Lecture-Tutorial Lectures- Practical)	194	1	0	0	0	974	99.89	4.99
5	Rate the electives offered in relation to the Technological advancements	193	2	0	0	0	973	99.79	4.98
6	Rate the relevance of the Text Books and reference books by their International recognition to the Courses	195	0	0	0	0	975	100	5



PRINCIPAL
Sri Venkateswara College of
Engineering and Technology,
Thirupachur, Tiruvallur - 631 203.



SRI VENKATESWARA

COLLEGE OF ENGINEERING AND TECHNOLOGY

Thirupachur-631203, Tiruvallur TK & DT
Approved by AICTE New Delhi & Affiliated to Anna University, Chennai
(A Telugu Minority Institution)

7	Rate the Size of syllabus in terms of the load on the student	190	3	2	0	0	968	99.28	4.96
8	Rate the courses in terms of extra learning or self-learning considering the design of the courses	192	0	2	1	0	968	99.28	4.96
9	Rate the evaluation scheme designed for each of the course	190	1	1	3	0	963	98.76	4.93
10	Rate the objectives stated for each of the course	195	0	0	0	0	975	100	5
11	Rate the composition of the courses in terms of Basic science, Engineering science, Humanities, Discipline core, discipline elective, open elective, project	194	1	0	0	0	974	99.89	4.99
12	Rate the domain used for designing the experiments for the LAB components	195	0	0	0	0	975	100	5
13	Rate the experiments in relation to the real life Applications	193	1	1	0	0	972	99.69	4.98
14	Rate the Library ambience is good for informal and self-learning.	194	1	0	0	0	974	99.89	4.99
15	Rate the Library is having good number of text and reference books and additional books for competitive exams.	193	1	1	0	0	972	99.69	4.98
16	Rate the High speed Internet facilities are available in the Campus.	195	0	0	0	0	975	100	5



PRINCIPAL
Sri Venkateswara College of
Engineering and Technology,
Thirupachur, Thiruvallur - 631 203.



SRI VENKATESWARA

COLLEGE OF ENGINEERING AND TECHNOLOGY

Thirupachur-631203, Tiruvallur TK & DT
Approved by AICTE New Delhi & Affiliated to Anna University, Chennai
(A Telugu Minority Institution)

17	Rate the Co and Extra Curricular facilities give good opportunities for students to explore themselves.	190	1	1	3	0	963	98.76	4.93
18	Rate the Canteen & Dinning space are adequate.	195	0	0	0	0	975	100	5
19	Rate the Quality, Clean drinking water is available.	195	0	0	0	0	975	100	5
20	Rate the Toilets/Washrooms are hygienic and well maintained.	190	1	2	2	0	964	98.87	4.94
21	Rate the buildings and Class Rooms are accessible to differently abled persons.	195	0	0	0	0	975	100	5
22	Rate the Institute is having good hostel and mess facilities.	195	0	0	0	0	975	100	5
23	Rate the Institute is having good Gym and Yoga Centers.	193	1	1	0	0	972	99.69	4.98
24	Rate the Institute is having good transport facilities and is also accessible through public transport.	195	0	0	0	0	975	100	5
25	Rate the Campus is green, plastic-free and eco-friendly.	195	0	0	0	0	975	100	5



PRINCIPAL
Sri Venkateswara College of
Engineering and Technology,
Thirupachur, Tiruvallur - 631 203

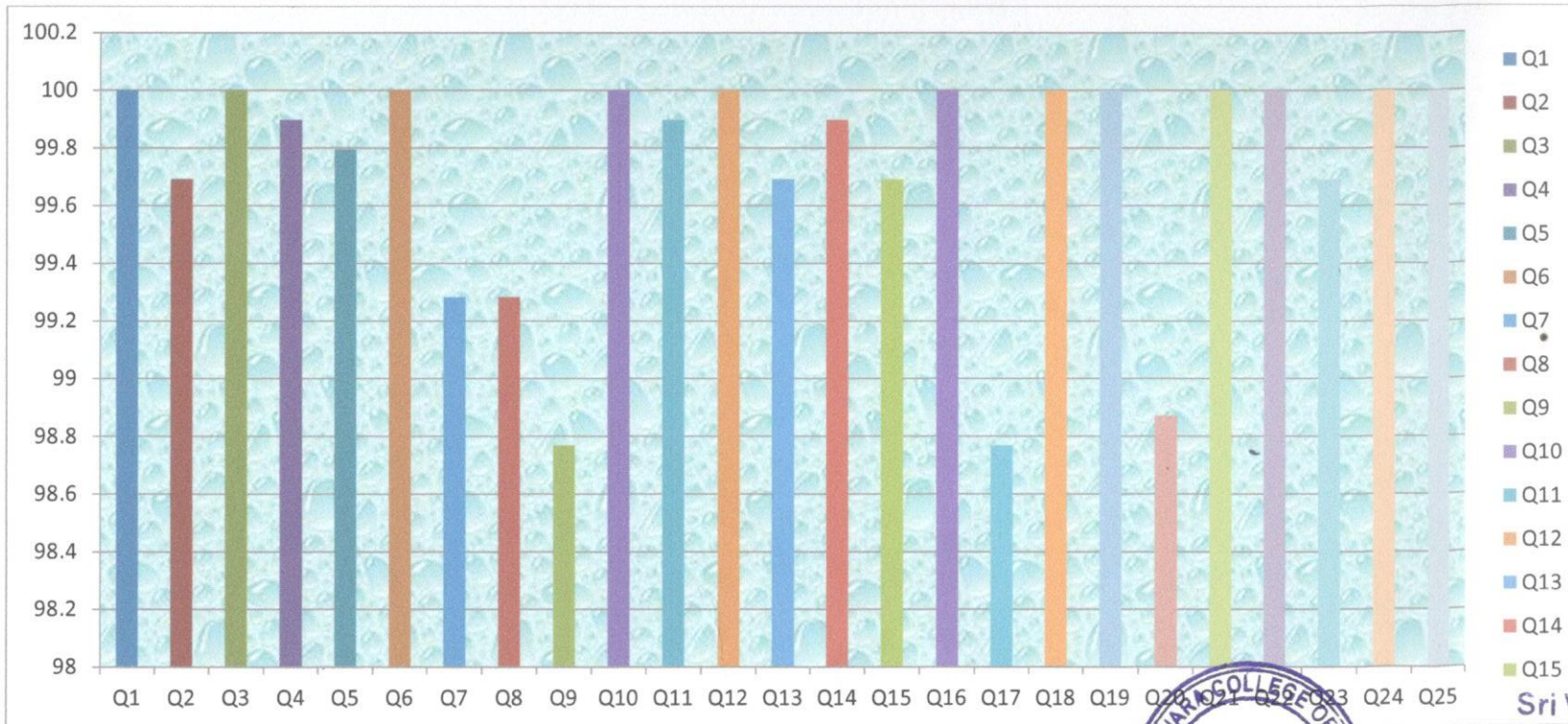


SRI VENKATESWARA COLLEGE OF ENGINEERING & TECHNOLOGY

Thirupachur - 631203, Thiruvallur Tk & DT.
Approved by AICTE, New Delhi and Affiliated to Anna University, Chennai.
(A Telugu Minority Institution)

STUDENT FEEDBACK ANALYSIS PROGRAM CODE & NAME: 631-MASTER OF BUSINESS ADMINISTRATION ACADEMIC YEAR: 2022-2023

STUDENT FEEDBACK ANALYSIS (MBA) (PERCENTAGE)



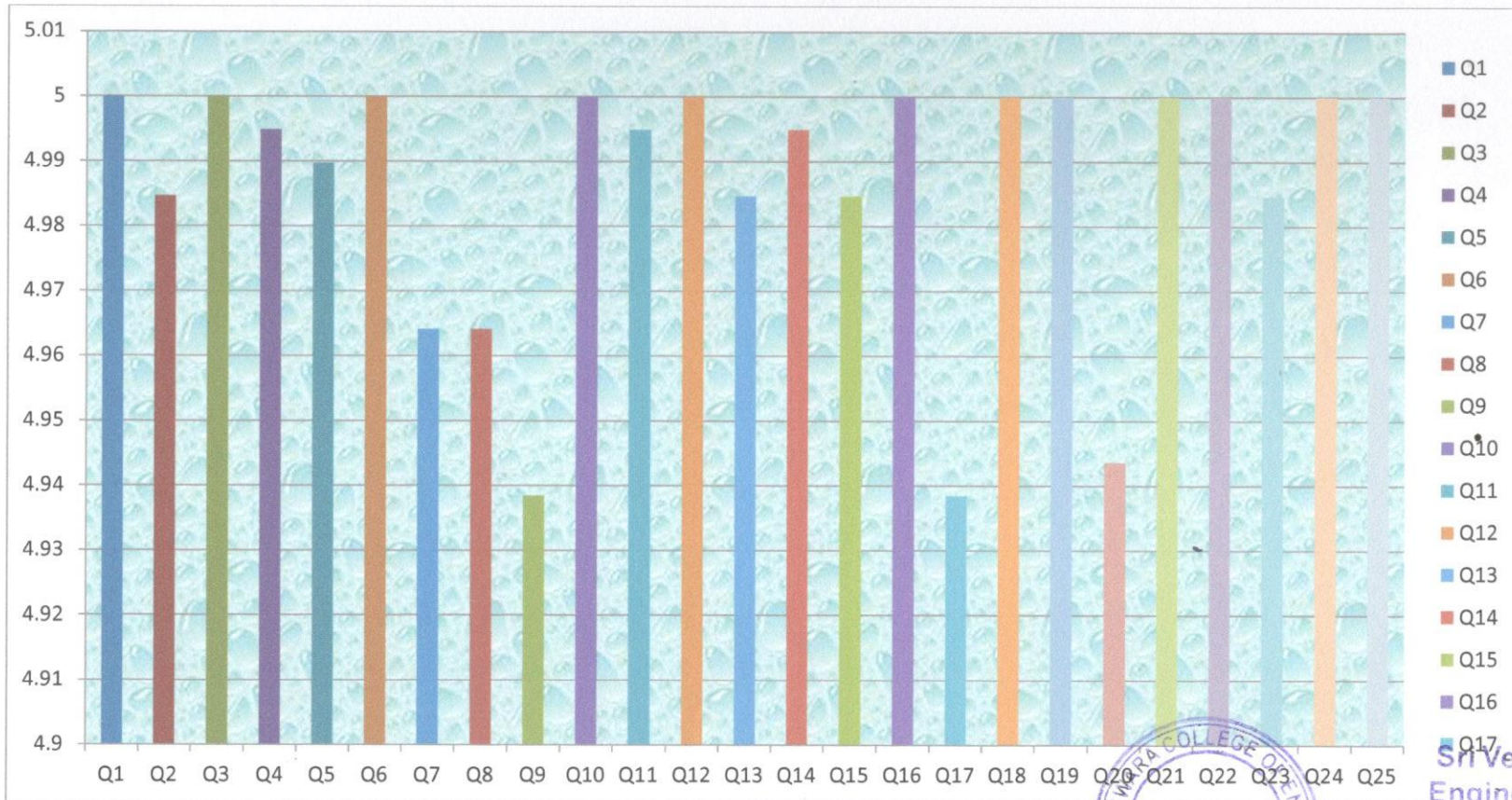
PRINCIPAL
Sri Venkateswara College of
Engineering and Technology,
Thirupachur, Thiruvallur - 631 203



SRI VENKATESWARA COLLEGE OF ENGINEERING & TECHNOLOGY

Thirupachur - 631203, Thiruvallur Tk & DT.
Approved by AICTE, New Delhi and Affiliated to Anna University, Chennai.
(A Telugu Minority Institution)

STUDENT FEEDBACK ANALYSIS (MBA) (5-SCALE WEIGHTAGE)




PRINCIPAL

Sri Venkateswara College of
Engineering and Technology,
Thirupachur, Thiruvallur - 631 203



SRI VENKATESWARA

COLLEGE OF ENGINEERING AND TECHNOLOGY

Thirupachur-631203, Tiruvallur TK & DT
Approved by AICTE New Delhi & Affiliated to Anna University, Chennai
(A Telugu Minority Institution)

PROGRAM CODE & NAME: 631-MASTER OF COMPUTER APPLICATION ACADEMIC YEAR: 2022-2023

S.NO	QUESTIONNAIRE	EXCELLENT (5)	VERY GOOD (4)	GOOD (3)	FAIR (2)	POOR (1)	Total weight age	%	5-scale weight age
1	Rate the sequence of the Courses that you have studied are in sequence to what you have studied in the previous semester?	167	0	0	0	0	835	100	5
2	Rate the syllabus of the courses that you have studied in relation to the competencies expected out of the course	166	1	0	0	0	834	99.8	4.99
3	Rate the relevance of the units in Syllabus relevant to the course	167	0	0	0	0	835	100	5
4	Rate the distribution of the contact hours among the course components (Lecture-Tutorial Lectures- Practical)	166	1	0	0	0	834	99.8	4.99
5	Rate the electives offered in relation to the Technological advancements	166	0	1	0	0	833	99.7	4.98
6	Rate the relevance of the Text Books and reference books by their International recognition to the Courses	152	7	6	2	0	810	97.00	4.85
7	Rate the Size of syllabus in terms of the	162	2	3	0	0	827	99.04	4.95



(Handwritten Signature)
NCPAL

Sri Venkateswara College of
Engineering and Technology,
Thirupachur, Tiruvallur - 631 203.



SRI VENKATESWARA

COLLEGE OF ENGINEERING AND TECHNOLOGY

Thirupachur-631203, Tiruvallur TK & DT
Approved by AICTE New Delhi & Affiliated to Anna University, Chennai
(A Telugu Minority Institution)

	load on the student								
8	Rate the courses in terms of extra learning or self-learning considering the design of the courses	152	8	6	1	0	812	97.24	4.86
9	Rate the evaluation scheme designed for each of the course	154	7	6	0	0	816	97.72	4.88
10	Rate the objectives stated for each of the course	152	7	7	1	0	811	97.12	4.85
11	Rate the composition of the courses in terms of Basic science, Engineering science, Humanities, Discipline core, discipline elective, open elective, project	165	2	0	0	0	833	99.76	4.98
12	Rate the domain used for designing the experiments for the LAB components	165	1	1	0	0	832	99.64	4.98
13	Rate the experiments in relation to the real life Applications	162	2	3	0	0	827	99.04	4.95
14	Rate the Library ambience is good for informal and self-learning.	152	7	8	0	0	812	97.24	4.86
15	Rate the Library is having good number of text and reference books and additional books for competitive exams.	162	3	2	0	0	828	99.16	4.95
16	Rate the High speed Internet facilities are available in the Campus.	152	6	7	2	0	809	96.88	4.84



PRINCIPAL
Sri Venkateswara College of
Engineering and Technology,
Thirupachur, Tiruvallur - 631 203.



SRI VENKATESWARA

COLLEGE OF ENGINEERING AND TECHNOLOGY

Thirupachur-631203, Tiruvallur TK & DT
Approved by AICTE New Delhi & Affiliated to Anna University, Chennai
(A Telugu Minority Institution)

17	Rate the Co and Extra Curricular facilities give good opportunities for students to explore themselves.	165	2	0	0	0	833	99.76	4.98
18	Rate the Canteen & Dinning space are adequate.	167	0	0	0	0	835	100	5
19	Rate the Quality, Clean drinking water is available.	152	7	6	2	0	810	97.00	4.85
20	Rate the Toilets/Washrooms are hygienic and well maintained.	162	3	1	1	0	827	99.04	4.95
21	Rate the buildings and Class Rooms are accessible to differently abled persons.	165	2	0	0	0	833	99.76	4.98
22	Rate the Institute is having good hostel and mess facilities.	165	1	1	0	0	832	99.64	4.98
23	Rate the Institute is having good Gym and Yoga Centers.	162	2	3	0	0	827	99.04	4.95
24	Rate the Institute is having good transport facilities and is also accessible through public transport.	165	2	0	0	0	833	99.76	4.98
25	Rate the Campus is green, plastic-free and eco-friendly.	167	0	0	0	0	835	100	5



PRINCIPAL
Sri Venkateswara College of
Engineering and Technology
Thirupachur, Tiruvallur - 631 203



SRI VENKATESWARA

COLLEGE OF ENGINEERING AND TECHNOLOGY

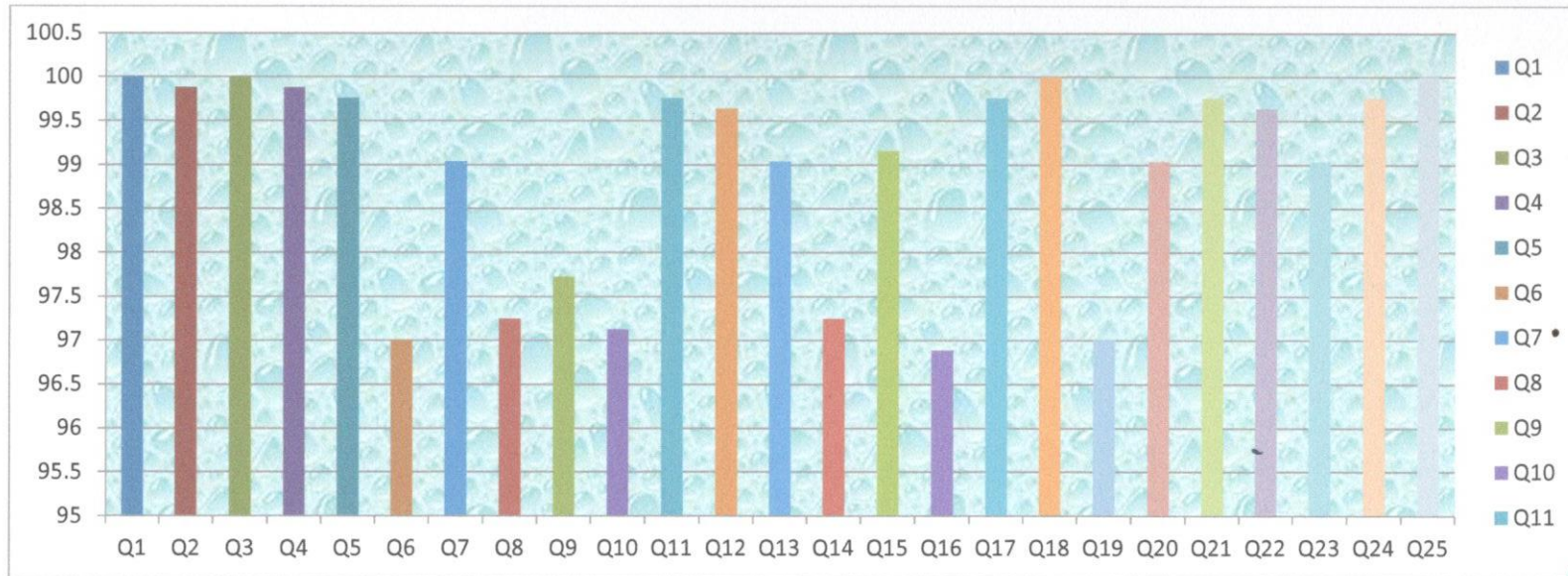
Thirupachur-631203, Tiruvallur TK & DT
Approved by AICTE New Delhi & Affiliated to Anna University, Chennai
(A Telugu Minority Institution)

STUDENT FEEDBACK ANALYSIS

PROGRAM CODE & NAME: 631-MASTER OF BUSINESS ADMINISTRATION

ACADEMIC YEAR: 2022-2023

STUDENT FEEDBACK ANALYSIS (MCA) (PERCENTAGE)



STUDENT FEEDBACK ANALYSIS (MCA) (5-SCALE WEIGHTAGE)



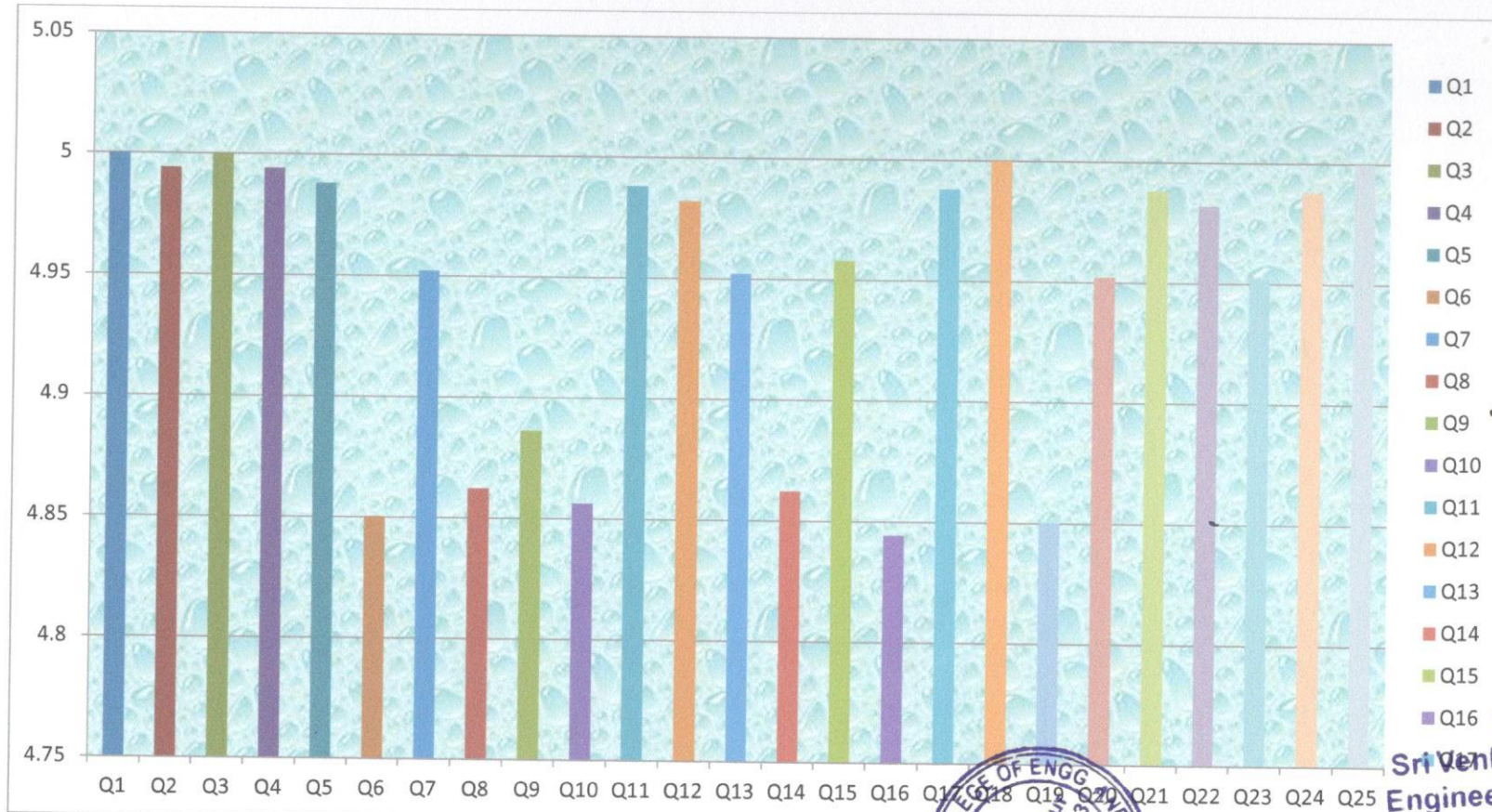
PRINCIPAL
Sri Venkateswara College of
Engineering and Technology,
Thirupachur, Tiruvallur - 631 203.




SRI VENKATESWARA COLLEGE OF ENGINEERING AND TECHNOLOGY

Thirupachur-631203, Tiruvallur TK & DT
Approved by AICTE New Delhi & Affiliated to Anna University, Chennai
(A Telugu Minority Institution)

STUDENT FEEDBACK ANALYSIS (MCA) (5-SCALE WEIGHTAGE)




PRINCIPAL
Sri Venkateswara College of
Engineering and Technology,
Thirupachur, Tiruvallur - 631 203